



GMT MONTHLY MEMBERSHIP PROGRESS REPORT

Results as of: 6/30/2019

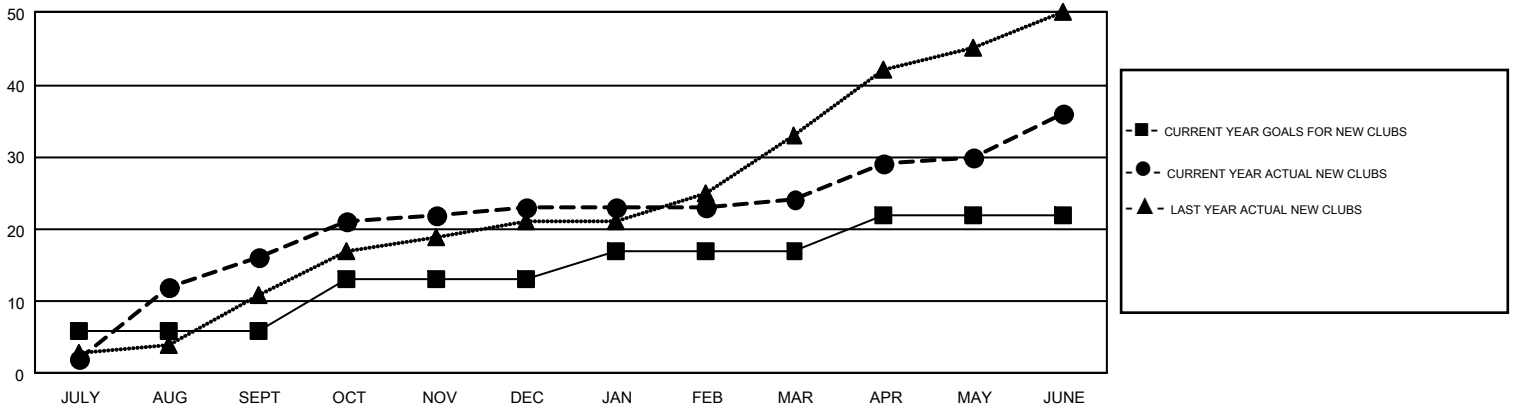
GMT Constitutional Area 7, Group C

GMT: YAHYA YASTPUTERA

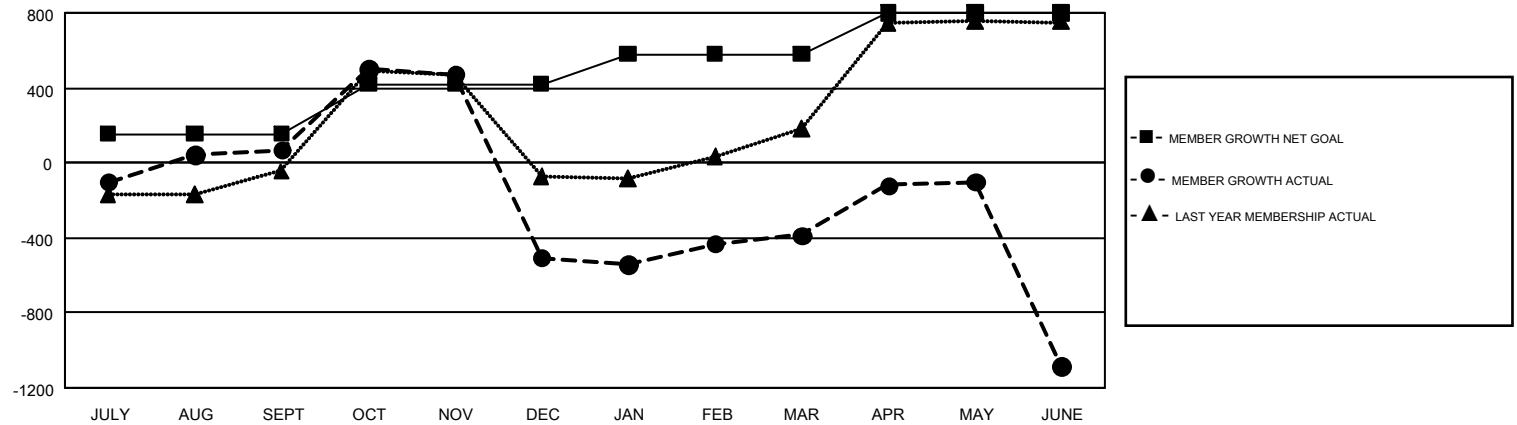
REPORT DOES NOT INCLUDE CLUBS IN UNDISTRICTED AREAS.

Clubs				Members			
RESULTS FOR 2018-2019				RESULTS FOR 2018-2019			
QUARTER	NEW CLUB GOAL	NEW CLUBS	DROPPED CLUBS	QUARTER	MEMBER GROWTH NET GOAL	MEMBER GROWTH ACTUAL	DROPPED MEMBERS ACTUAL (including transfers)
JULY/AUG/SEPT	6	16	15	JULY/AUG/SEPT	155	665	568
OCT/NOV/DEC	7	7	21	OCT/NOV/DEC	265	777	1,339
JAN/FEB/MAR	4	1	6	JAN/FEB/MAR	160	369	195
APR/MAY/JUNE	5	12	20	APR/MAY/JUNE	220	846	1,524

GOALS AND ACTUAL NEW CLUBS CUMULATIVE



GOALS AND ACTUAL MEMBERS CUMULATIVE



DROPPED CLUBS: 62	261 CLUBS OF 401 ADDED 1 OR MORE NEW MEMBERS	GENDER DISTRIBUTION MALE 4,247 (42.91%) FEMALE 5,650 (57.09%)
DROPPED MEMBERS DECEASED 35 CLUB CANCELLED 679 OTHER 2,911 TOTAL 3,625	CLICK HERE FOR CUMULATIVE MEMBERSHIP DATA	TOTAL FAMILY UNIT MEMBERS 2,134 FAMILY MEMBERS PAYING HALF DUES 1,172